

Product	DC	OAL	D CON MS	D CCB	LU	LF	TDZ	KWW	KWD	GAMF	GAMP								
	(mm)	(mm)	(mm)	(mm)	(mm)	(mm)	(mm)	(mm)	(mm)	(°)	(°)								
63A09R-S90TN10-C	63	-	22	18	-	40	-	10.4	6.3	-15	-11	9	✓	15500	✓	0.63	GI292	SQ303	-
80A10R-S90TN10-C	80	-	27	38	-	50	-	12.4	7	-15	-11	10	✓	13800	✓	1.03	GI292	SQ301	AC001

GI292	TNGX 1004..

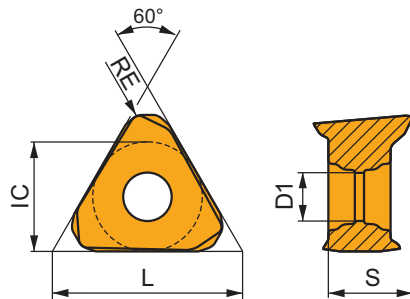
SQ300	US 52506-T07P	0.8	M 2.5	6	-	-	Flag T07P	-	-
SQ301	US 52506-T07P	0.8	M 2.5	6	D-T07P/T09P	FG-15	-	-	-
SQ302	US 52506-T07P	0.8	M 2.5	6	D-T07P/T09P	FG-15	-	-	HS 0830C
SQ303	US 52506-T07P	0.8	M 2.5	6	D-T07P/T09P	FG-15	-	-	HS 1030C

AC001	KS 1230	K.FMH27

TNGX 10

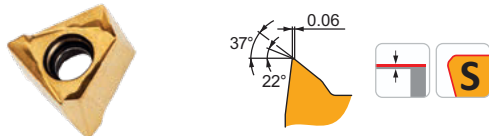


	IC	D1	L	S
	(mm)	(mm)	(mm)	(mm)
1004	6.000	2.80	10.39	4.69



Echivalența și valorile de pornire pentru viteza de așchiere (vc), avans (f) și adâncimea de așchiere (ap). Consultați aplicația noastră Calculator app pentru alte calcule.

Product	RE (mm)	P			M			K			N			S			H		
		vc	f	ap	vc	f	ap	vc	f	ap	vc	f	ap	vc	f	ap	vc	f	ap
	(mm)	(m/min)	(mm/tooth)	(mm)	(m/min)	(mm/tooth)	(mm)	(m/min)	(mm/tooth)	(mm)	(m/min)	(mm/tooth)	(mm)	(m/min)	(mm/tooth)	(mm)	(m/min)	(mm/tooth)	(mm)

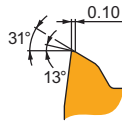


F geometrie cu design extrem de pozitiv pentru prelucrarea ușoară.

TNGX 100402SR-F:M8330	● 0.2	■ 205	■ 0.09	■ 2.0	■ 120	■ 0.08	■ 2.0	■ 190	■ 0.09	■ 2.0	-	-	-	-	-	-	-	-	-
TNGX 100402SR-F:M8340	● 0.2	■ 190	■ 0.09	■ 2.0	■ 110	■ 0.08	■ 2.0	■ 180	■ 0.09	■ 2.0	-	-	-	-	-	-	-	-	-
TNGX 100404SR-F:8215	● 0.4	■ 225	■ 0.09	■ 2.0	■ 135	■ 0.08	■ 2.0	■ 210	■ 0.09	■ 2.0	-	-	-	-	-	-	-	-	-
TNGX 100404SR-F:M6330	● 0.4	■ 190	■ 0.09	■ 2.0	■ 135	■ 0.08	■ 2.0	-	-	-	-	-	-	-	-	-	-	-	-
TNGX 100404SR-F:M8330	● 0.4	■ 220	■ 0.09	■ 2.0	■ 130	■ 0.08	■ 2.0	■ 205	■ 0.09	■ 2.0	-	-	-	-	-	-	-	-	-
TNGX 100404SR-F:M8340	● 0.4	■ 200	■ 0.09	■ 2.0	■ 120	■ 0.08	■ 2.0	■ 190	■ 0.09	■ 2.0	-	-	-	-	-	-	-	-	-
TNGX 100404SR-F:M9340	● 0.4	■ 270	■ 0.09	■ 2.0	■ 160	■ 0.08	■ 2.0	-	-	-	-	-	-	-	-	-	-	-	-
TNGX 100408SR-F:8215	● 0.8	■ 270	■ 0.09	■ 2.0	■ 160	■ 0.08	■ 2.0	■ 255	■ 0.09	■ 2.0	-	-	-	-	-	-	-	-	-
TNGX 100408SR-F:M6330	● 0.8	■ 225	■ 0.09	■ 2.0	■ 160	■ 0.08	■ 2.0	-	-	-	-	-	-	-	-	-	-	-	-
TNGX 100408SR-F:M8330	● 0.8	■ 260	■ 0.09	■ 2.0	■ 155	■ 0.08	■ 2.0	■ 245	■ 0.09	■ 2.0	-	-	-	-	-	-	-	-	-
TNGX 100408SR-F:M8340	● 0.8	■ 240	■ 0.09	■ 2.0	■ 140	■ 0.08	■ 2.0	■ 225	■ 0.09	■ 2.0	-	-	-	-	-	-	-	-	-
TNGX 100408SR-F:M9340	● 0.8	■ 320	■ 0.09	■ 2.0	■ 190	■ 0.08	■ 2.0	-	-	-	-	-	-	-	-	-	-	-	-

Echivalența și valorile de pornire pentru viteza de așchiere (vc), avans (f) și adâncimea de așchiere (ap). Consultați aplicația noastră Calculator app pentru alte calcule.

Product	RE (mm)	P			M			K			N			S			H		
		vc (m/min)	f (mm/tooth)	ap (mm)	vc (m/min)	f (mm/tooth)	ap (mm)	vc (m/min)	f (mm/tooth)	ap (mm)	vc (m/min)	f (mm/tooth)	ap (mm)	vc (m/min)	f (mm/tooth)	ap (mm)	vc (m/min)	f (mm/tooth)	ap (mm)



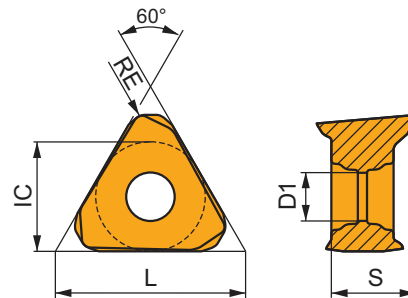
M geometrie cu design pozitiv pentru prelucrări ușoare până la medie.

TNGX 100404SR-M:8215	● 0.4	■ 205	0.13	2.0	■ 120	0.12	2.0	■ 190	0.13	2.0	–	–	–	■ 50	0.09	1.6	–	–	–
TNGX 100404SR-M:M6330	● 0.4	■ 175	0.13	2.0	■ 125	0.12	2.0	–	–	–	–	–	–	■ 50	0.09	1.6	–	–	–
TNGX 100404SR-M:M8330	● 0.4	■ 205	0.13	2.0	■ 120	0.12	2.0	■ 190	0.13	2.0	–	–	–	■ 50	0.09	1.6	–	–	–
TNGX 100404SR-M:M8340	● 0.4	■ 185	0.13	2.0	■ 110	0.12	2.0	■ 175	0.13	2.0	–	–	–	■ 45	0.09	1.6	–	–	–
TNGX 100404SR-M:M9340	● 0.4	■ 240	0.13	2.0	■ 140	0.12	2.0	–	–	–	–	–	–	■ 60	0.09	1.6	–	–	–
TNGX 100408SR-M:8215	● 0.8	■ 245	0.13	2.0	■ 145	0.12	2.0	■ 230	0.13	2.0	–	–	–	■ 60	0.09	1.6	–	–	–
TNGX 100408SR-M:M6330	● 0.8	■ 210	0.13	2.0	■ 150	0.12	2.0	–	–	–	–	–	–	■ 60	0.09	1.6	–	–	–
TNGX 100408SR-M:M8310	● 0.8	■ 270	0.13	2.0	■ 135	0.12	2.0	■ 255	0.13	2.0	–	–	–	–	–	–	–	–	–
TNGX 100408SR-M:M8330	● 0.8	■ 245	0.13	2.0	■ 145	0.12	2.0	■ 230	0.13	2.0	–	–	–	■ 60	0.09	1.6	–	–	–
TNGX 100408SR-M:M8340	● 0.8	■ 220	0.13	2.0	■ 130	0.12	2.0	■ 205	0.13	2.0	–	–	–	■ 55	0.09	1.6	–	–	–
TNGX 100408SR-M:M8345	● 0.8	■ 180	0.13	2.0	■ 105	0.12	2.0	–	–	–	–	–	■ 45	0.09	1.6	–	–	–	
TNGX 100408SR-M:M9340	● 0.8	■ 285	0.13	2.0	■ 170	0.12	2.0	–	–	–	–	–	■ 70	0.09	1.6	–	–	–	
TNGX 100412SR-M:M8330	● 1.2	■ 255	0.13	2.0	■ 150	0.12	2.0	■ 240	0.13	2.0	–	–	–	■ 60	0.09	1.6	–	–	–
TNGX 100412SR-M:M8340	● 1.2	■ 230	0.13	2.0	■ 135	0.12	2.0	■ 215	0.13	2.0	–	–	–	■ 55	0.09	1.6	–	–	–
TNGX 100416SR-M:M8310	● 1.6	■ 300	0.13	2.0	■ 150	0.12	2.0	■ 285	0.13	2.0	–	–	–	–	–	–	–	–	–
TNGX 100416SR-M:M8330	● 1.6	■ 270	0.13	2.0	■ 160	0.12	2.0	■ 255	0.13	2.0	–	–	–	■ 65	0.09	1.6	–	–	–
TNGX 100416SR-M:M8340	● 1.6	■ 245	0.13	2.0	■ 145	0.12	2.0	■ 230	0.13	2.0	–	–	–	■ 60	0.09	1.6	–	–	–

TNGX 10-FA

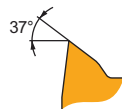
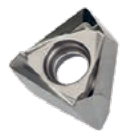
PRAMET

	IC (mm)	D1 (mm)	L (mm)	S (mm)
1004	6.000	2.80	10.39	4.69



Echivalența și valorile de pornire pentru viteza de așchiere (vc), avans (f) și adâncimea de așchiere (ap). Consultați aplicația noastră Calculator app pentru alte calcule.

Product	RE (mm)	P			M			K			N			S			H		
		vc (m/min)	f (mm/tooth)	ap (mm)	vc (m/min)	f (mm/tooth)	ap (mm)	vc (m/min)	f (mm/tooth)	ap (mm)	vc (m/min)	f (mm/tooth)	ap (mm)	vc (m/min)	f (mm/tooth)	ap (mm)	vc (m/min)	f (mm/tooth)	ap (mm)



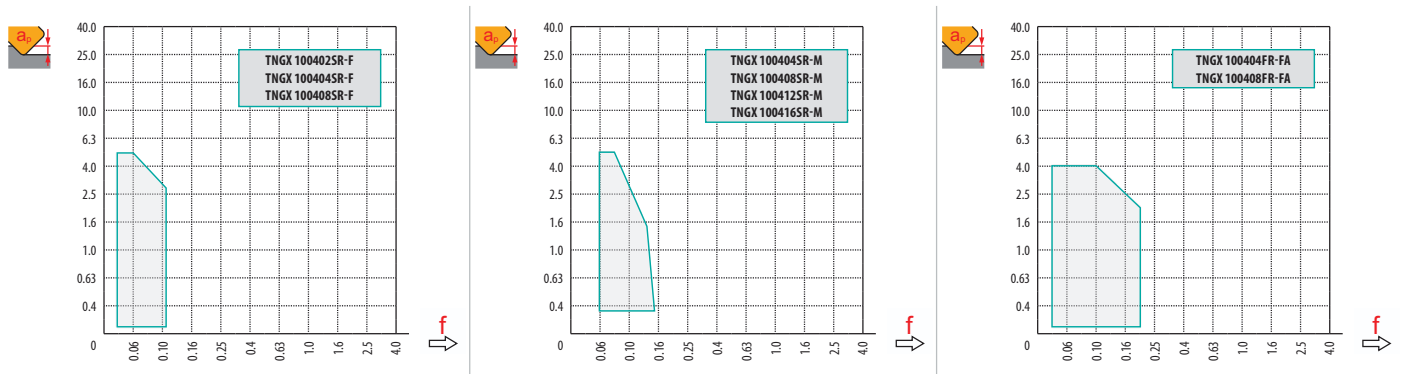
FA geometrie cu design extrem de pozitiv pentru prelucrare de superfiniție până la medie.

TNGX 100404FR-FA:HF7	● 0.4	–	–	–	–	–	–	–	–	–	■ 345	0.10	1.5	–	–	–	–	–	–
TNGX 100404FR-FA:M0315	● 0.4	–	–	–	–	–	–	–	–	–	■ 780	0.10	1.5	–	–	–	–	–	–
TNGX 100408FR-FA:HF7	● 0.8	–	–	–	–	–	–	–	–	–	■ 345	0.10	1.5	–	–	–	–	–	–
TNGX 100408FR-FA:M0315	● 0.8	–	–	–	–	–	–	–	–	–	■ 780	0.10	1.5	–	–	–	–	–	–



a_e / DC	5%	10%	15%	20%	25%	30%	40%	50%	60%	70%	75%	80%	90%	100%
	1.48	1.35	1.27	1.22	1.19	1.16	1.11	1.08	1.05	1.03	1.00	1.00	1.00	1.00
	2.20	1.60	1.35	1.20	1.10	0.95	0.85	0.75	0.85	0.95	1.00	1.00	1.00	1.00
	0.64	0.64	0.64	0.64	0.64	0.65	0.65	0.67	0.68	0.71	0.72	0.74	0.79	1.00

	TNGX 10-F			TNGX 10-M				TNGX 10-FA	
	0.2	0.4	0.8	0.4	0.8	1.2	1.6	0.4	0.8
	1.53	1.34	0.92	1.34	0.92			1.33	0.93



1.5	1.0 3.0 5.0	0.2
	0.10 0.08 0.04	

	RPMX	APMX/I		DMIN	DMAX		
						DMIN	DMAX
18	1.80°	3.05/100	18	33	36	1.2	1.2
20	1.60°	2.70/100	20	37	40	1.2	1.2
22	1.20°	2.00/100	22	41	44	1.0	1.0
25	1.00°	1.70/100	25	47	50	1.0	1.0
30	0.90°	1.45/100	30	57	60	1.0	1.0
32	0.80°	1.30/100	32	61	64	1.0	1.0
35	0.65°	1.00/100	35	67	70	0.9	0.9
40	0.60°	0.90/100	40	77	80	0.9	0.9
50	0.50°	0.70/100	50	97	100	0.9	0.9
63	0.40°	0.50/100	63	123	126	0.9	0.9
80	0.25°	0.30/100	80	157	160	0.9	0.9

STN16



PRAMET

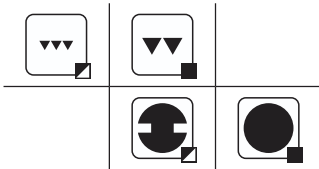
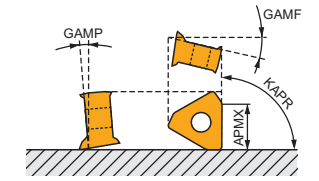
S



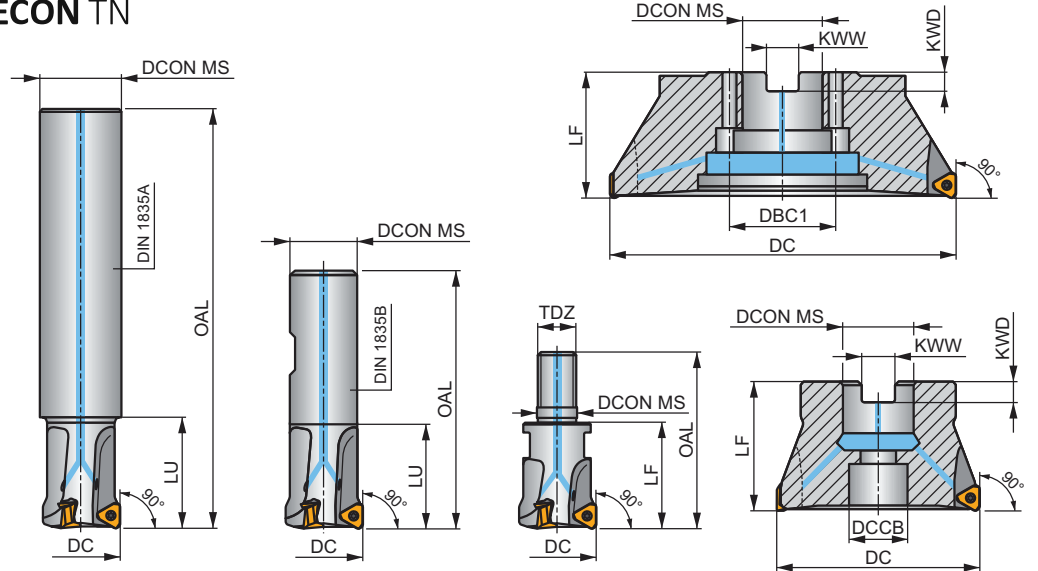
ECON TN16 Freză pentru frezare cu umăr cu lichid de răcire intern

Freze la 90° care utilizează plăcuțe TNGX 16 cu două fețe cu 6 muchii tăietoare și APMX de 10 mm. Potrivit pentru o gamă largă de aplicații. Disponibil cu coadă cilindrică, Weldon, modular și pe alezaj (cu pas diferențial al dinților). Corp tratat pentru o durată mai mare de viață a sculei.

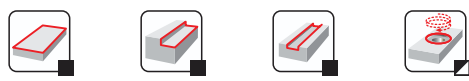
KAPR	90°
APMX	10.0 mm



ECON TN



	h _m 0.03 - 0.13
	h _m 0.03 - 0.15



Product	DC (mm)	OAL (mm)	DCON MS (mm)	DCCB (mm)	DBC1 (mm)	LU (mm)	LF (mm)	TDZ	KWW (mm)	KWD (mm)	GAMF (°)	GAMP (°)							
25A2R034A25-STN16-C	25	170	25	-	-	34	-	-	-	-	-18.5	-9.5	2	-	20000	✓	0.54	GI340	C0382
32A2R034A32-STN16-C	32	195	32	-	-	34	-	-	-	-	-16	-9.5	2	-	17500	✓	1.05	GI340	C0382
25A2R080A25-STN16-C	25	170	25	-	-	80	-	-	-	-	-18.5	-9.5	2	-	20000	✓	0.48	GI340	C0382
32A2R080A32-STN16-C	32	195	32	-	-	80	-	-	-	-	-16	-9.5	2	-	17500	✓	0.96	GI340	C0382
32A3R034A32-STN16-C	32	195	32	-	-	34	-	-	-	-	-16	-9.5	3	-	17500	✓	1.04	GI340	C0382
35A3R034A32-STN16-C	35	195	32	-	-	34	-	-	-	-	-16	-9.5	3	-	17000	✓	1.07	GI340	C0382
25A2R042B25-STN16-C	25	110	25	-	-	42	-	-	-	-	-18.5	-9.5	2	-	20000	✓	0.29	GI340	C0382
32A3R042B32-STN16-C	32	110	32	-	-	42	-	-	-	-	-16	-9.5	3	-	17500	✓	0.52	GI340	C0382
40A4R050B32-STN16-C	40	120	32	-	-	50	-	-	-	-	-16	-9.5	4	-	16000	✓	0.68	GI340	C0382
25A2R033M12-STN16-C	25	55	12.5	-	-	-	33	M12	-	-	-18.5	-9.5	2	-	20000	✓	0.10	GI340	C0382
32A2R043M16-STN16-C	32	66	17	-	-	-	43	M16	-	-	-16	-9.5	2	-	17500	✓	0.18	GI340	C0382
32A3R043M16-STN16-C	32	66	17	-	-	-	43	M16	-	-	-16	-9.5	3	-	17500	✓	0.17	GI340	C0382
40A3R043M16-STN16-C	40	66	17	-	-	-	43	M16	-	-	-16	-9.5	3	-	16000	✓	0.20	GI340	C0382
40A4R043M16-STN16-C	40	66	17	-	-	-	43	M16	-	-	-16	-9.5	4	-	16000	✓	0.21	GI340	C0382
40A03R-S90TN16-C	40	40	16	12.4	-	-	40	-	8.4	5.6	-16	-9.5	3	-	16000	✓	0.32	GI340	C0384
40A04R-S90TN16-C	40	40	16	12.4	-	-	40	-	8.4	5.6	-16	-9.5	4	-	16000	✓	0.31	GI340	C0384
50A04R-S90TN16-C	50	40	22	18.1	-	-	40	-	10.4	6.3	-16	-9.5	4	✓	14000	✓	0.34	GI340	C0386
50A05R-S90TN16-C	50	40	22	18.1	-	-	40	-	10.4	6.3	-16	-9.5	5	✓	14000	✓	0.32	GI340	C0386
63A04R-S90TN16-C	63	40	22	18.1	-	-	40	-	10.4	6.3	-16	-9.5	4	✓	12500	✓	0.47	GI340	C0386
63A06R-S90TN16-C	63	40	22	18.1	-	-	40	-	10.4	6.3	-16	-9.5	6	✓	12500	✓	0.48	GI340	C0386
80A05R-S90TN16-C	80	50	27	22.1	-	-	50	-	12.4	7	-16	-9.5	5	✓	11000	✓	1.15	GI340	C0388
80A07R-S90TN16-C	80	50	27	22.1	-	-	50	-	12.4	7	-16	-9.5	7	✓	11000	✓	1.17	GI340	C0388
100A06R-S90TN16-C	100	50	32	45.1	-	-	50	-	14.4	8	-16	-9.5	6	✓	10000	✓	1.79	GI340	C0390
100A08R-S90TN16-C	100	50	32	45.1	-	-	50	-	14.4	8	-16	-9.5	8	✓	10000	✓	1.66	GI340	C0390
115A06R-S90TN16-C	115	50	32	45.1	-	-	50	-	14.4	8	-16	-9.5	6	✓	9500	✓	2.21	GI340	C0390
125A07R-S90TN16-C	125	63	40	56.1	-	-	63	-	16.4	9	-16	-9.5	7	✓	9000	✓	3.05	GI340	C0390
125A09R-S90TN16-C	125	63	40	56.1	-	-	63	-	16.4	9	-16	-9.5	9	✓	9000	✓	3.14	GI340	C0390

Product	DC	OAL	D CON MS	DCCB	DBC1	LU	LF	TDZ	KWW	KWD	GAMF	GAMP						
	(mm)	(mm)	(mm)	(mm)	(mm)	(mm)	(mm)	(mm)	(mm)	(mm)	(°)	(°)						
140A08R-S90TN16-C	140	63	40	56.1	-	-	63	-	16.4	9	-16	-9.5	8	✓	8500	✓	3.69	G1340 C0390
160C10R-S90TN16-C	160	63	40	-	66.7	-	63	-	16.4	9.2	-16	-9.5	10	✓	8000	✓	5.16	G1340 C0394
175C10R-S90TN16-C	175	63	40	-	66.7	-	63	-	16.4	9.2	-16	-9.5	10	✓	7500	✓	6.89	G1340 C0394

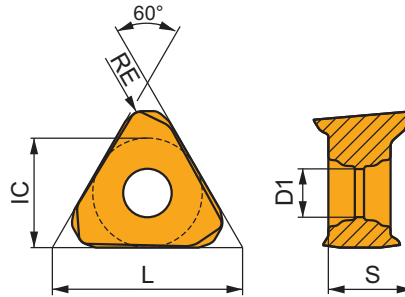
	TNGX 1606..
--	-------------

C0382	US 44010-T15P	3.5	M 4	10	-	-	Flag T15P	-	-	-
C0384	US 44010-T15P	3.5	M 4	10	D-T08P/T15P	FG-15	-	HS 90835	-	-
C0386	US 44010-T15P	3.5	M 4	10	D-T08P/T15P	FG-15	-	HS 1030C	-	-
C0388	US 44010-T15P	3.5	M 4	10	D-T08P/T15P	FG-15	-	HS 1230C	-	-
C0390	US 44010-T15P	3.5	M 4	10	D-T08P/T15P	FG-15	-	-	-	-
C0394	US 44010-T15P	3.5	M 4	10	D-T08P/T15P	FG-15	-	HS 1240C	HSD 0825C	CAC 160C

TNGX 16

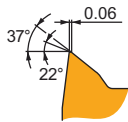
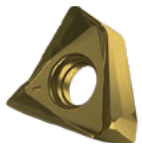


	IC	D1	L	S
	(mm)	(mm)	(mm)	(mm)
1606	9.525	4.40	16.50	6.58



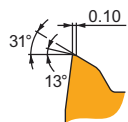
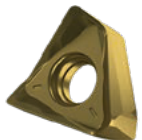
Echivalența și valorile de pornire pentru viteza de așchiere (vc), avans (f) și adâncimea de așchiere (ap). Consultați aplicația noastră Calculator app pentru alte calcule.

Product	RE (mm)	P			M			K			N			S			H		
		vc	f	ap	vc	f	ap	vc	f	ap	vc	f	ap	vc	f	ap	vc	f	ap
		(m/min)	(mm/tooth)	(mm)	(m/min)	(mm/tooth)	(mm)	(m/min)	(mm/tooth)	(mm)	(m/min)	(mm/tooth)	(mm)	(m/min)	(mm/tooth)	(mm)	(m/min)	(mm/tooth)	(mm)



F geometrie cu design extrem de pozitiv pentru prelucrarea ușoară.

TNGX 160604SR-F-M8330	● 0.4	■ 205	■ 0.10	■ 3.0	■ 120	■ 0.09	■ 3.0	■ 190	■ 0.10	■ 3.0	-	-	-	-	-	-	-	-	-
TNGX 160604SR-F-M8340	● 0.4	■ 190	■ 0.10	■ 3.0	■ 110	■ 0.09	■ 3.0	■ 180	■ 0.10	■ 3.0	-	-	-	-	-	-	-	-	-
TNGX 160608SR-F-8215	● 0.8	■ 250	■ 0.10	■ 3.0	■ 150	■ 0.09	■ 3.0	■ 235	■ 0.10	■ 3.0	-	-	-	-	-	-	-	-	-
TNGX 160608SR-F-M6330	● 0.8	■ 215	■ 0.10	■ 3.0	■ 150	■ 0.09	■ 3.0	-	-	-	-	-	-	-	-	-	-	-	-
TNGX 160608SR-F-M8310	● 0.8	■ 280	■ 0.10	■ 3.0	■ 140	■ 0.09	■ 3.0	■ 265	■ 0.10	■ 3.0	-	-	-	-	-	-	-	-	-
TNGX 160608SR-F-M8330	● 0.8	■ 245	■ 0.10	■ 3.0	■ 145	■ 0.09	■ 3.0	■ 230	■ 0.10	■ 3.0	-	-	-	-	-	-	-	-	-
TNGX 160608SR-F-M8340	● 0.8	■ 225	■ 0.10	■ 3.0	■ 135	■ 0.09	■ 3.0	■ 210	■ 0.10	■ 3.0	-	-	-	-	-	-	-	-	-

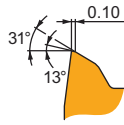
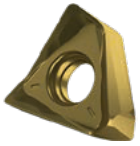


M geometrie cu design pozitiv pentru prelucrări ușoare până la medii.

TNGX 160604SR-M-8215	● 0.4	■ 180	■ 0.18	■ 3.0	■ 105	■ 0.16	■ 3.0	■ 170	■ 0.18	■ 3.0	-	-	-	■ 45	■ 0.13	■ 2.4	-	-	-
TNGX 160604SR-M-M6330	● 0.4	■ 155	■ 0.18	■ 3.0	■ 110	■ 0.16	■ 3.0	-	-	-	-	-	-	■ 45	■ 0.13	■ 2.4	-	-	-
TNGX 160604SR-M-M8310	● 0.4	■ 205	■ 0.15	■ 3.0	■ 100	■ 0.14	■ 3.0	■ 190	■ 0.15	■ 3.0	-	-	-	-	-	-	-	-	-
TNGX 160604SR-M-M8330	● 0.4	■ 180	■ 0.18	■ 3.0	■ 105	■ 0.16	■ 3.0	■ 170	■ 0.18	■ 3.0	-	-	-	■ 45	■ 0.13	■ 2.4	-	-	-

Echivalența și valorile de pornire pentru viteza de așchiere (vc), avans (f) și adâncimea de așchiere (ap). Consultați aplicația noastră Calculator app pentru alte calcule.

Product	RE (mm)	P			M			K			N			S			H		
		vc (m/min)	f (mm/tooth)	ap (mm)	vc (m/min)	f (mm/tooth)	ap (mm)	vc (m/min)	f (mm/tooth)	ap (mm)	vc (m/min)	f (mm/tooth)	ap (mm)	vc (m/min)	f (mm/tooth)	ap (mm)	vc (m/min)	f (mm/tooth)	ap (mm)



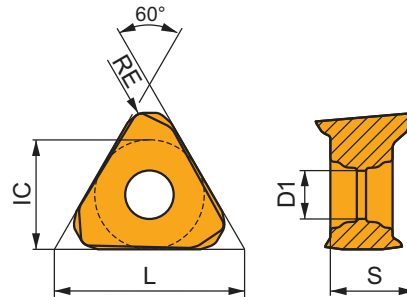
M geometrie cu design pozitiv pentru prelucrări ușoare până la medii.

TNGX 160604SR-M:M8340	● 0.4	■ 165	0.18	3.0	■ 95	0.16	3.0	■ 155	0.18	3.0	—	—	—	■ 40	0.13	2.4	—	—	—
TNGX 160608SR-M:M8215	● 0.8	■ 215	0.18	3.0	■ 125	0.16	3.0	■ 200	0.18	3.0	—	—	—	■ 50	0.13	2.4	—	—	—
TNGX 160608SR-M:M6330	● 0.8	■ 185	0.18	3.0	■ 130	0.16	3.0	—	—	—	—	—	—	■ 55	0.13	2.4	—	—	—
TNGX 160608SR-M:M8310	● 0.8	■ 245	0.15	3.0	■ 120	0.14	3.0	■ 230	0.15	3.0	—	—	—	—	—	—	—	—	—
TNGX 160608SR-M:M8330	● 0.8	■ 215	0.18	3.0	■ 125	0.16	3.0	■ 200	0.18	3.0	—	—	—	■ 50	0.13	2.4	—	—	—
TNGX 160608SR-M:M8340	● 0.8	■ 195	0.18	3.0	■ 115	0.16	3.0	■ 185	0.18	3.0	—	—	—	■ 45	0.13	2.4	—	—	—
TNGX 160608SR-M:M8345	● 0.8	■ 155	0.18	3.0	■ 90	0.16	3.0	—	—	—	—	—	—	■ 35	0.13	2.4	—	—	—
TNGX 160608SR-M:M9325	● 0.8	■ 285	0.15	3.0	—	—	—	■ 270	0.15	3.0	—	—	—	—	—	—	—	—	—
TNGX 160608SR-M:M9340	● 0.8	■ 245	0.18	3.0	■ 145	0.16	3.0	—	—	—	—	—	—	■ 60	0.13	2.4	—	—	—
TNGX 160612SR-M:M8330	● 1.2	■ 230	0.18	3.0	■ 135	0.16	3.0	■ 215	0.18	3.0	—	—	—	■ 55	0.13	2.4	—	—	—
TNGX 160612SR-M:M8340	● 1.2	■ 205	0.18	3.0	■ 120	0.16	3.0	■ 190	0.18	3.0	—	—	—	■ 50	0.13	2.4	—	—	—
TNGX 160616SR-M:M8310	● 1.6	■ 275	0.15	3.0	■ 140	0.14	3.0	■ 260	0.15	3.0	—	—	—	—	—	—	—	—	—
TNGX 160616SR-M:M8330	● 1.6	■ 240	0.18	3.0	■ 140	0.16	3.0	■ 225	0.18	3.0	—	—	—	■ 60	0.13	2.4	—	—	—
TNGX 160616SR-M:M8340	● 1.6	■ 220	0.18	3.0	■ 130	0.16	3.0	■ 205	0.18	3.0	—	—	—	■ 55	0.13	2.4	—	—	—

TNGX 16-FA

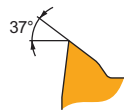
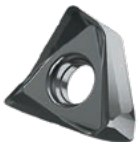
PRAMET

	IC (mm)	D1 (mm)	L (mm)	S (mm)
1606	9.525	4.40	16.50	6.58



Echivalența și valorile de pornire pentru viteza de așchiere (vc), avans (f) și adâncimea de așchiere (ap). Consultați aplicația noastră Calculator app pentru alte calcule.

Product	RE (mm)	P			M			K			N			S			H		
		vc (m/min)	f (mm/tooth)	ap (mm)	vc (m/min)	f (mm/tooth)	ap (mm)	vc (m/min)	f (mm/tooth)	ap (mm)	vc (m/min)	f (mm/tooth)	ap (mm)	vc (m/min)	f (mm/tooth)	ap (mm)	vc (m/min)	f (mm/tooth)	ap (mm)



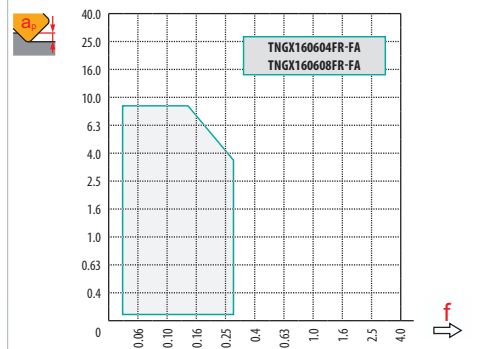
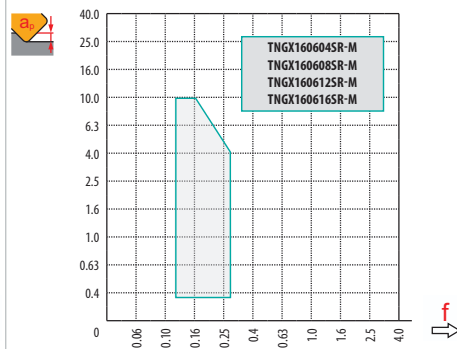
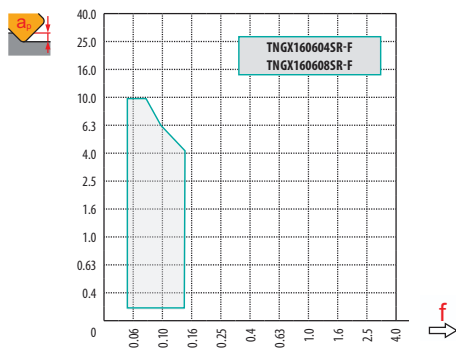
FA geometrie cu design extrem de pozitiv pentru prelucrare de superfiniție până la medie.

TNGX 160604FR-FA:HF7	● 0.4	—	—	—	—	—	—	—	—	—	■ 255	0.14	2.0	—	—	—	—	—	—
TNGX 160604FR-FA:M0315	● 0.4	—	—	—	—	—	—	—	—	—	■ 585	0.14	2.0	—	—	—	—	—	—
TNGX 160608FR-FA:HF7	● 0.8	—	—	—	—	—	—	—	—	—	■ 300	0.14	2.0	—	—	—	—	—	—
TNGX 160608FR-FA:M0315	● 0.8	—	—	—	—	—	—	—	—	—	■ 690	0.14	2.0	—	—	—	—	—	—



a_e / DC	5%	10%	15%	20%	25%	30%	40%	50%	60%	70%	75%	80%	90%	100%
	1.48	1.35	1.27	1.22	1.19	1.16	1.11	1.08	1.05	1.03	1.00	1.00	1.00	1.00
	2.20	1.60	1.35	1.20	1.10	0.95	0.85	0.75	0.85	0.95	1.00	1.00	1.00	1.00
	0.64	0.64	0.64	0.64	0.64	0.65	0.65	0.67	0.68	0.71	0.72	0.74	0.79	1.00

	TNGX 16-F		TNGX 16-M				TNGX 16-FA	
	0.4	0.8	0.4	0.8	1.2	1.6	0.4	0.8
	2.10	1.9	2.10	1.90	1.73	1.14	2.10	1.90



	3.0	4.5	6.0
	0.18	0.14	0.10



DC	min	d _{min} = DC *		min	d = 1.25 DC		min	d = 1.5 DC		min	d = 1.75 DC		min	d ≥ 2 DC	
		S _{MAX}	a _{e max}		S _{MAX}	a _{e max}		S _{MAX}	a _{e max}		S _{MAX}	a _{e max}		S _{MAX}	a _{e max}
25	25	0.14	1.3	31	0.22	2.2	38	0.33	3.0	44	0.60	4.0	50	0.70	5.0
32	32	0.16	1.5	40	0.33	2.8	48	0.44	4.0	56	0.70	5.0	64	0.90	6.5
40	40	0.22	2.0	50	0.38	3.5	60	0.55	5.0	70	0.90	6.5	80	1.15	8.0
50	50	0.27	2.5	63	0.50	4.5	75	0.70	6.5	88	1.00	8.0	100	1.40	10.0
63	63	0.33	3.2	80	0.60	5.5	95	0.90	8.0	110	1.45	10.0	125	1.80	12.5
80	80	0.55	4.0	100	1.00	7.0	120	1.45	10.0	140	2.15	13.0	160	2.60	16.0
100	100	0.70	5.0	125	1.20	9.0	150	1.80	12.5	175	2.70	16.5	200	3.30	20.0
115	115	0.85	6.0	145	1.50	10.0	175	1.90	14.5	200	2.80	19.0	230	3.80	23.0
125	125	0.90	6.5	155	1.60	11.0	190	2.30	15.5	220	3.10	20.0	250	4.10	25.0
140	140	1.00	7.0	175	1.80	12.5	210	2.60	17.5	245	3.70	23.0	280	4.60	28.0
160	160	1.20	8.0	200	2.00	14.0	240	2.90	20.0	280	4.30	26.0	320	5.30	32.0
175	175	1.30	8.8	220	2.20	15.5	265	3.20	22.0	305	4.70	29.0	350	5.80	35.0

* Verificați reducerea vitezei de avans atunci când diametrul găurii este între d_{min} – 1.5 DC.

